



ADT® Commercial

Commercial Security, Fire and Life Safety Solutions

We are **100%** focused on our commercial customers.

ADT Commercial takes a holistic approach to managing your risk and helps to ensure all solutions are working together. Because some threats can be complex, our services provide a layered approach with multiple levels of defense.

Intrusion detection

Intrusion alarms and professional monitoring can help provide your business with effective, affordable protection for employees and your customers. They can help prevent unauthorized property entry, burglary, theft and vandalism. Panic buttons can be activated to notify responders in the event of a robbery or other dangerous scenario. Our eSuiteSM services allow you to conveniently monitor and control your security system remotely.

Cloud-based video surveillance

Today we can use video to help enhance your business intelligence and help put a lid on rising costs. Our cloud-based video surveillance solution allows you to record, store and access video from multiple locations in a secure online environment without the need to manage servers and software.

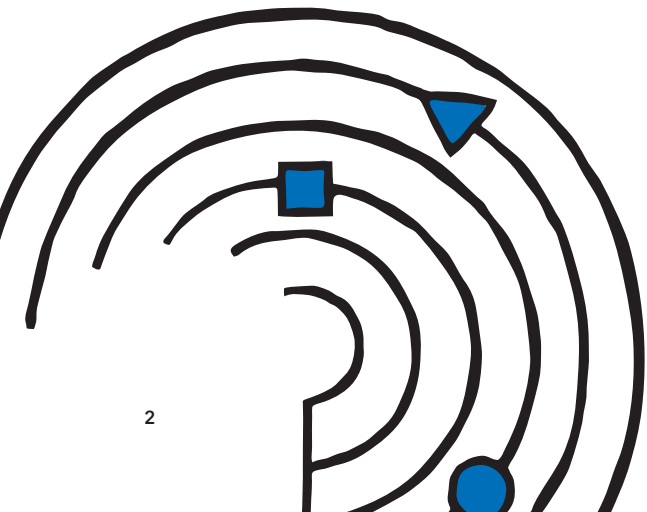
Fire alarm system installation, maintenance and monitoring

Our comprehensive fire and security service offerings include everything from planning and installation using advanced technologies, to sophisticated monitoring services, along with testing and maintenance from specially trained and certified technicians. We excel at integrating complete, complex and customized fire and security systems. Whether you need to update a legacy system or start from the ground up, our expertise covers most major manufacturers.

- 24/7/365 UL Listed, Five Diamond CSAA Monitoring
- Fire doors and smoke/fire dampers
- Fire extinguishers
- Fire sprinklers and suppression (in select markets)
- Sound and communications

Network Operations Centers

Our two ADT Commercial Network Operations Centers (NOC) are staffed by a highly skilled team of IT professionals who help monitor security for companies both large and small. Our team holds the Cisco Cloud and Managed Services Express Partner Certification—and they can apply their expertise to help manage and monitor your cybersecurity solutions. We help monitor your network and firewall, manage your anti-virus software and create cloud-based backups to help ensure business continuity.





Access control systems

The ability to control and manage access to your business at all entry points is critical to the safety of your employees and customers—and why access control systems should go beyond simply locking and unlocking doors. We offer hosted and managed access control options in addition to stand-alone solutions.

Integrated solutions

Our enterprise solutions team can help build network-based solutions for your organization, complete with the project management and technical resources you require to help with successful project implementation and ongoing support. The ADT Commercial Network Operations Center (NOC) team creates and implements networks, ISP services and more. They can monitor the health of a network and connected devices for turnkey implementation and management.

Remote video

Video verification helps to ensure a fast police response time and aids in reducing false alarm fees. Our central station operators can view on-site activity associated with the receipt of an incoming intrusion alarm signal. This allows us to provide your contact with more information about activity at the location to help avoid an unnecessary police dispatch. In case of an actual intrusion attempt, we can provide descriptions and location of perpetrators to the authorities.

Video assistance increases site security and helps protect employees—making your business a safer place for customers and employees alike. Our central station operators use interactive remote video to provide your employees with immediate access to professional security assistance.

Video escorts can provide added peace of mind to employees as they arrive and leave your property. To use this service, employees simply call a dedicated phone number from the safety of their vehicle or your facility. A remote video connection is then established by a central station operator, and we watch employees to help ensure they remain safe as they enter or leave your facility.

Video guard tours help enhance site security without increasing your on-site physical guard costs. We can perform remote video guard tours at the times and intervals you select, looking for any suspicious activity or unusual conditions, as per your specific instructions.

eSuiteSM account management

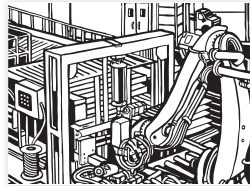
eSuite is a superior customer account management tool that will help your business easily navigate the administrative and reporting requirements of monitored systems.

We understand your risks and will help you manage them.

ADT Commercial provides comprehensive physical security, fire and life safety solutions that allow you to focus on running your business—while we help mitigate the many risks you face in today's business environments.



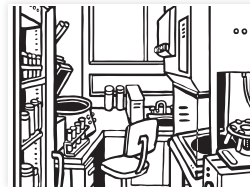
Banking and financial services



Industrial



Commercial buildings



Pharmaceutical



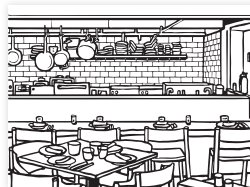
Education



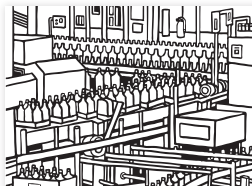
Professional services



Energy and utilities



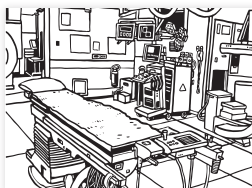
Restaurant



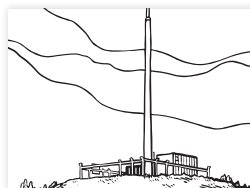
Food and beverage



Retail



Healthcare



Telecommunications



Hospitality



Transportation and logistics

We are committed to customer service excellence.



We offer customers the best of both worlds—a strong national company with local offices providing a quality service experience.



We dispatch technical personnel certified to service the systems at your sites, and they show up on time with the right equipment. We also email you an expected service time arrival and technician picture, so you know who to expect, and when.



We strive to answer calls within a few rings—with no automated phone systems. Same-day service is our goal, not an upcharge. We have thousands of in-house technicians to help us deliver this exceptional service response.



Our enterprise-level solutions include Lenel OnGuard, Honeywell Pro-Watch, Software House, AMAG Technology, Genetec, Avigilon and Milestone. In select markets, we also offer Edwards, Notifier and Gamewell FCI.



We have dedicated commercial monitoring centers—redundant and listed by Underwriters Laboratories. We provide monitoring and advanced network services through our two Network Operations Centers.





Powered by Experience. Driven by Excellence.™



ADT has been serving businesses for more than 145 years. After splitting from its parent company in 2012, ADT emerged as a separate company initially focused on home and small business security. Since then, ADT merged with Protection 1, building upon its commercial capabilities and customer focused approach with over 15 strategic acquisitions. ADT Commercial is founded on decades of experience serving commercial clients.

Our only business is helping to protect your business.

We've grown our commercial technical competency to serve customers in a unique way—with the scale and expertise to help meet your needs throughout the U.S. Our leadership has a single-minded focus on our commercial customers—having spent the majority of their careers in the security, fire and life safety industries. ADT Commercial was formed to focus on the disciplines required to help meet the complex needs of our commercial customers.



Expertise in delivering customer service excellence and servicing multisite National Accounts.



Offering risk management consultancy and expertise servicing Fortune 1000 and global enterprises.



Providing leadership in fire, life safety and integrated security solutions.

Local offices.
National resources.
Personal service.

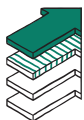
Many large security companies contract outside dealers to represent them, but we hire all of our own security sales consultants as employees. We are a national company with highly trained local professionals who provide innovative security products and services, expert installation and unparalleled customer service.



📍 Monitoring and Network Operations Centers ● Commercial Locations ★ Corporate Headquarters

Our commitment to customers

These guiding principles are the foundation of ADT Commercial. They drive our success as we strive to deliver customer service excellence at every point of interaction.



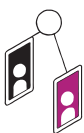
Customers are Our True North

We know that our reputation is based on how we serve our customers.



Our People are the Difference

We strive to be the best technically-trained team in the business.



Dedicated to Commercial

We are 100% focused on our commercial customers.



One Ideal Partner

We are the premier holistic solutions partner—a full-service national company with nimble local delivery teams.

Let's start a conversation.

We make it easy to switch providers, and our onboarding process is predictable, dependable and painless. You will be assigned a dedicated team to help with recommending and implementing the solutions that fit your needs.



833.238.5224

adt.com/commercial

ADT Commercial

Powered by Experience. Driven by Excellence.™



SSI

Integrated Installation
(Multi-Site) 2018



SSI

Installer of the Year
2018



SDM

Dealer of the Year
2017



TMA

Five Diamond
Certification



A+ BBB Rating

Accredited
Business